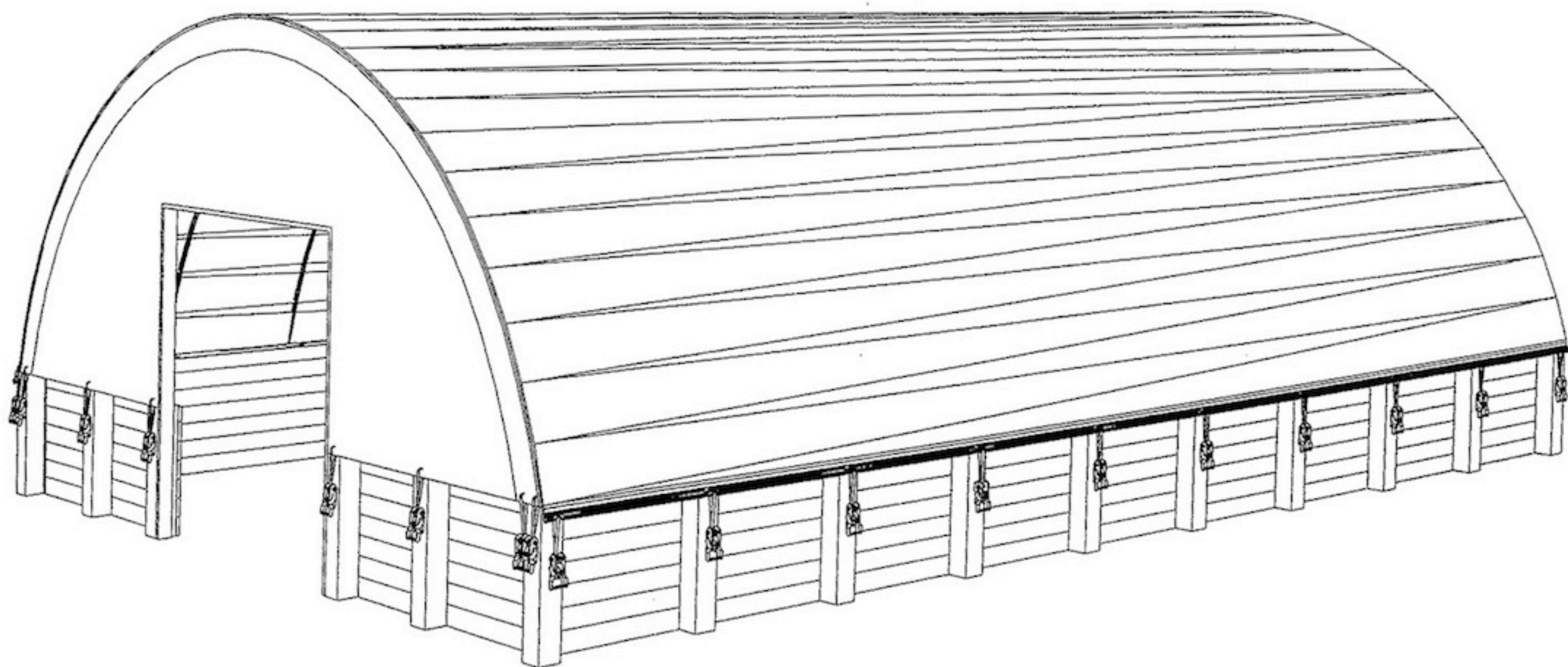


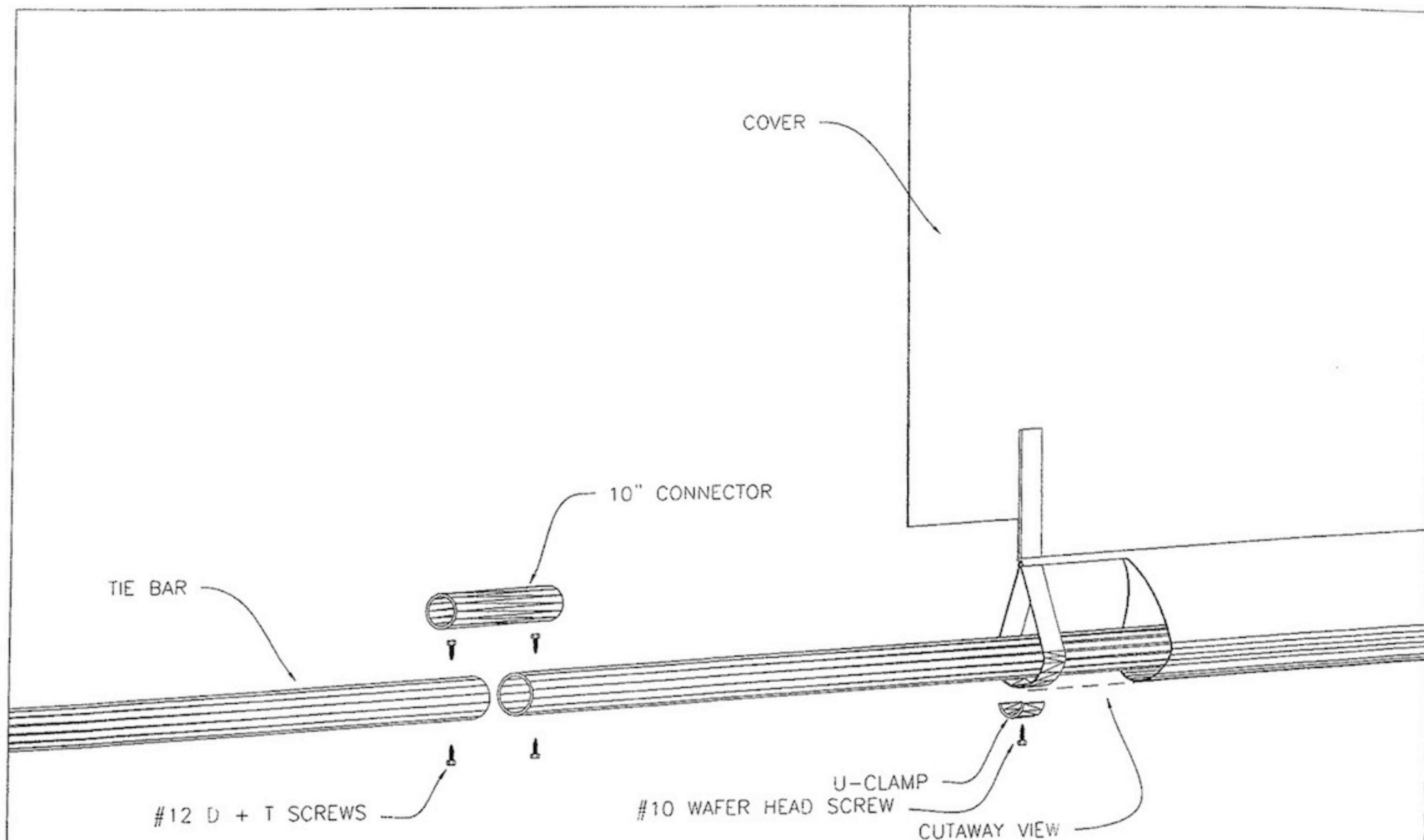
BARN INSTRUCTIONS

Building size: _____

Customer: _____

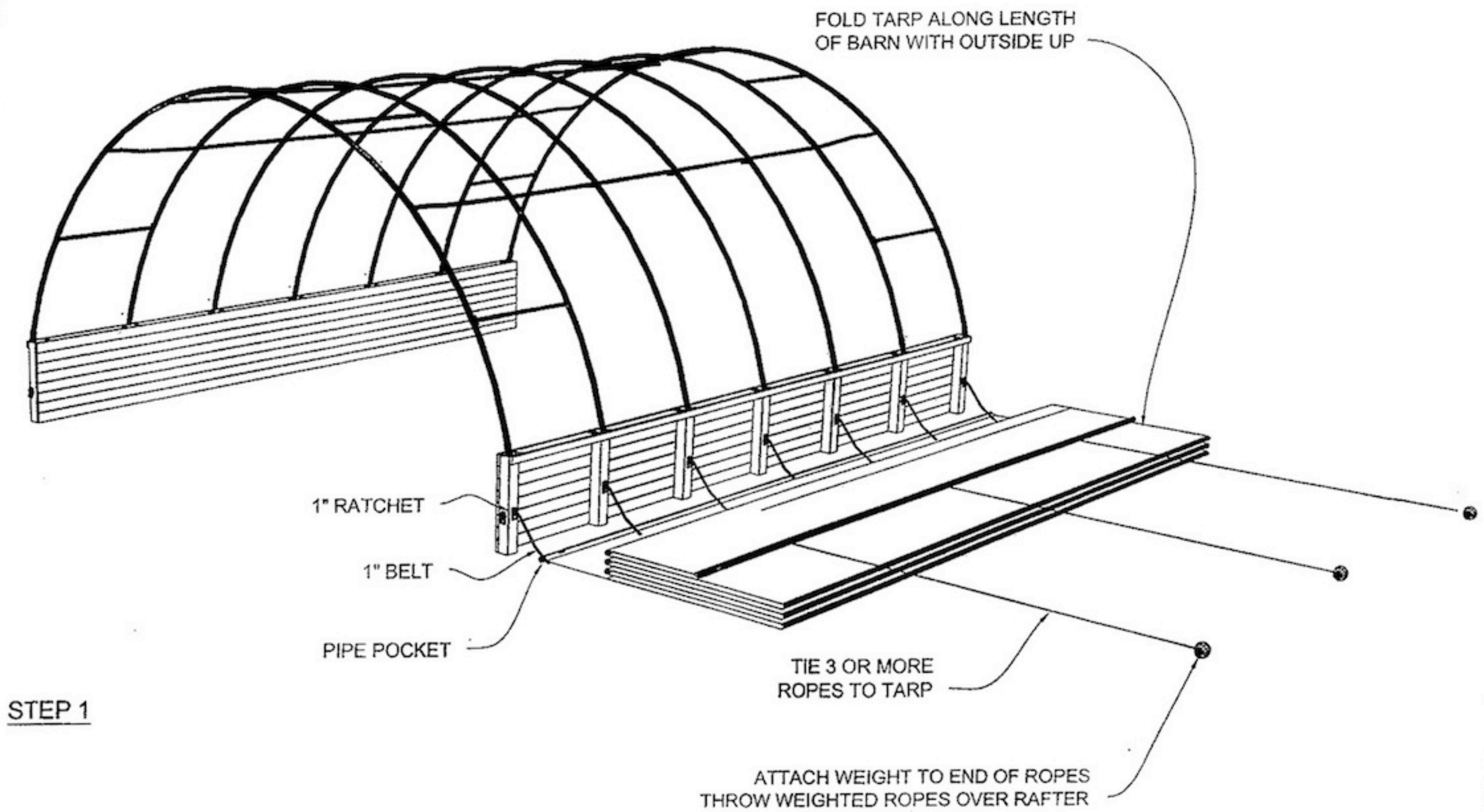
P.O.#: _____



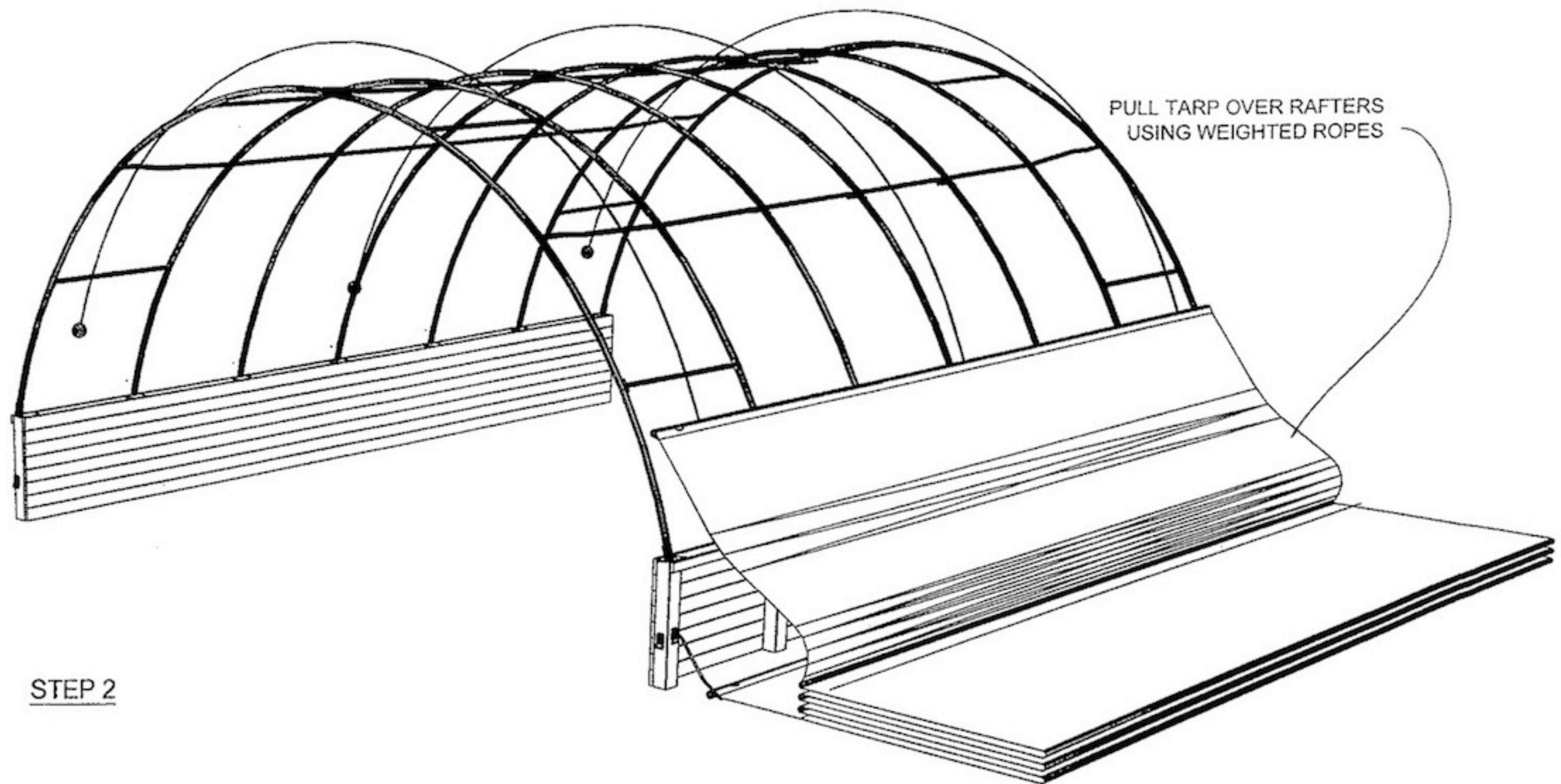


SLIDE ONE END OF TIE BAR INTO POCKET OF COVER. BEFORE TIE BAR IS COMPLETELY INTO THE POCKET, SLIDE CONNECTOR HALFWAY INTO FIRST TIE BAR AND FASTEN WITH 2-#12 D + T SCREWS. SLIDE THE NEXT TIE BAR ONTO CONNECTOR AND FASTEN WITH 2-#12 SCREWS. SLIDE INTO POCKET AND CONTINUE WITH TIE BAR SECTIONS UNTIL IT IS THE LENGTH OF THE COVER. FASTEN COVER TO TIE BAR WITH U-CLAMPS AND #10 WAFER HEAD SCREWS.

PEMBINA VALLEY CANVAS		WINNIPEG, MANITOBA	
DRAWN BY:	MANUFACTURED BY:		
B.H.	TIE BAR CONNECTION		
DATE:	DESCRIPTION		DRAWING NO.
03/08/06	INSTRUCTIONS		



PEMBINA VALLEY CANVAS		WINKLER, MANITOBA	
DESIGN BY:	MANUFACTURED BY:		
B.H.	TITLE:		
DATE:	PULL COVER (FIGURE 9A)		
02/07/07	DESCRIPTION:	DRAWING NO.	
	BARN	PAGE 10	

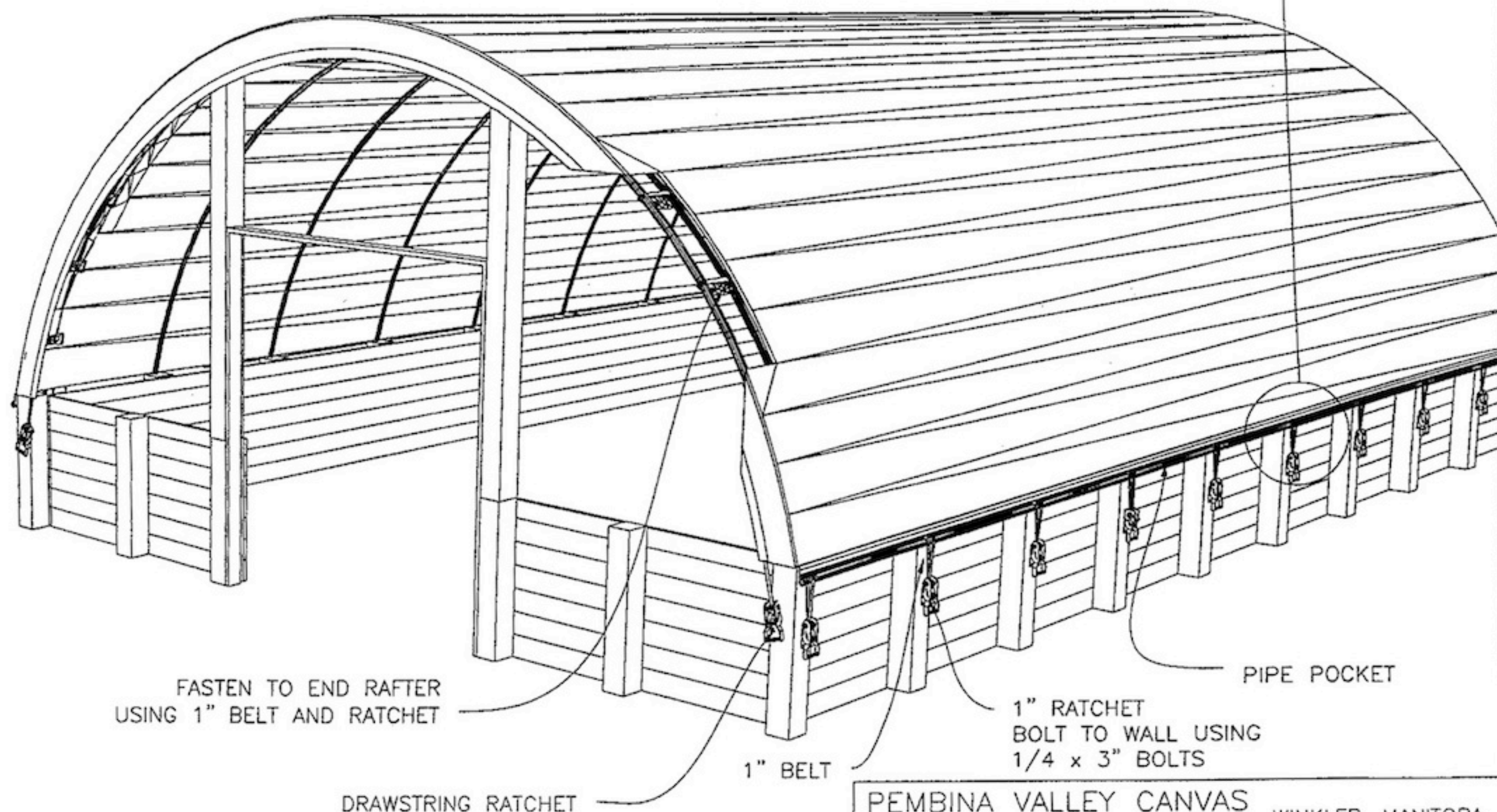
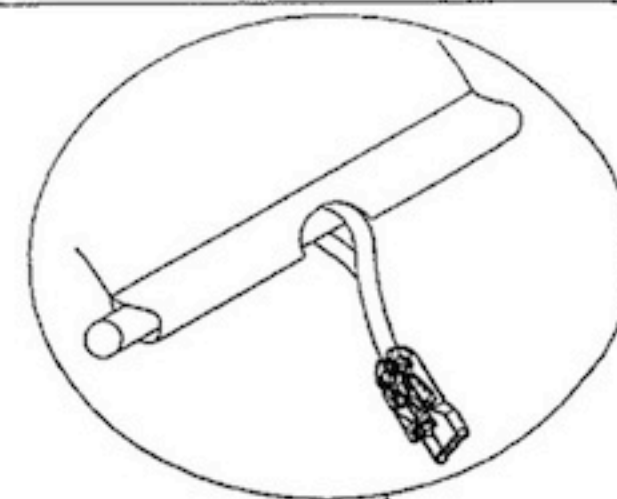


STEP 2

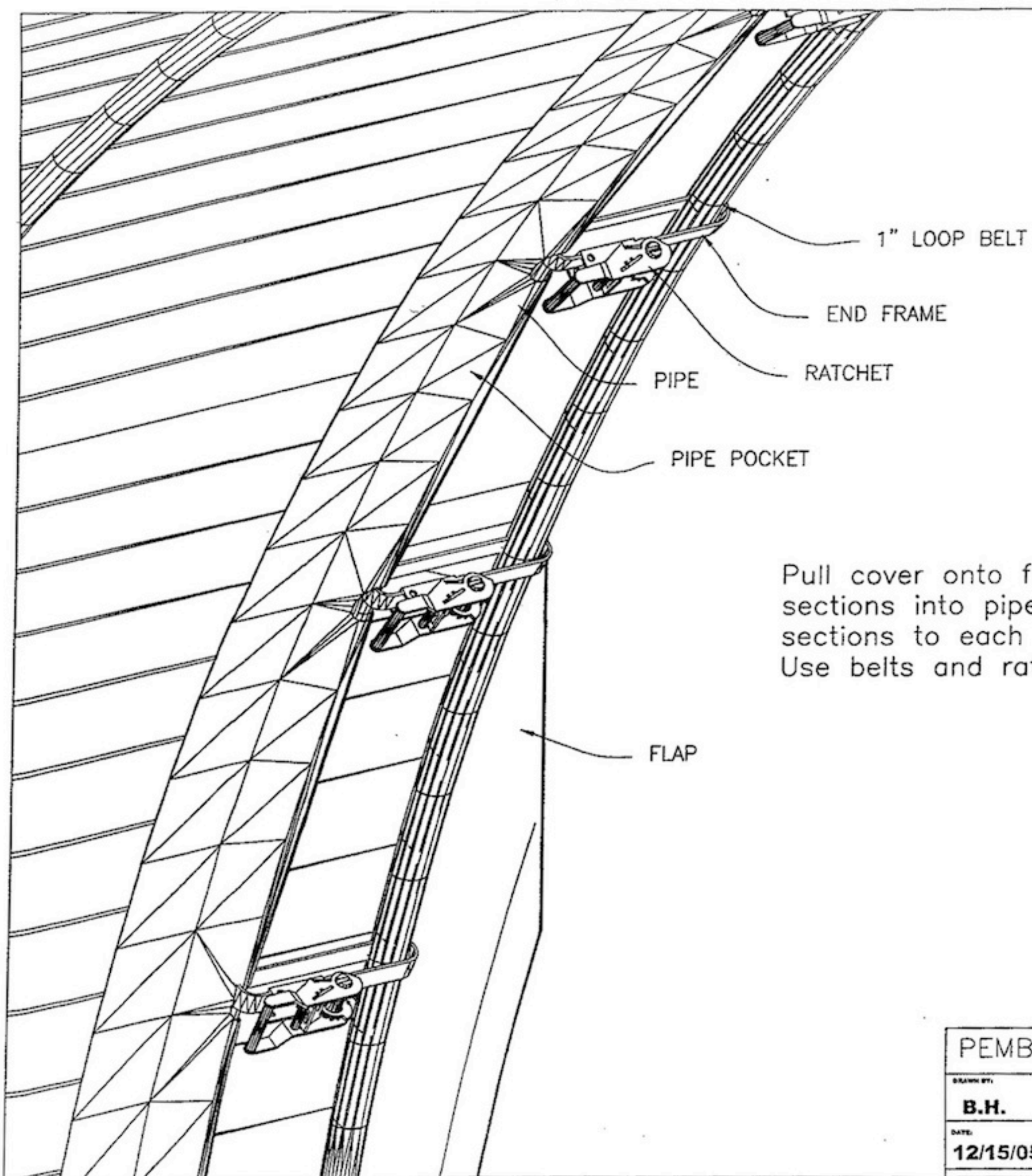
IMPORTANT
COVER SHOULD ALWAYS BE TIGHTENED
END TO END BEFORE TIGHTENING SIDE TO SIDE

PEMBINA VALLEY CANVAS		WINKLER, MANITOBA	
DESIGNED BY:	MANUFACTURED BY:		
B.H.	TITLE:		
DATE:	PULL COVER (FIGURE 9B)		
02/07/07	DESCRIPTION:	DRAWING NO.	
	BARN	PAGE 11	

Position main tarp onto frame. Insure tarp is level and squared with the same amount of over hang at both ends and both sides. Start securing the cover by fastening the pipe and pocket to the end rafter with 1" belt and ratchet. Fasten 1" belt to ratchet with 1 bolt through the loop. Fasten one end of cover so that the pipe and pocket are approximately 18" away from the outside of the end rafter. Then move to the other end and repeat. After the second end is secure, return to the first end and re-tension. Slip the end of the hood strap into the ratchet/winch and tension the straps until the cover is snug. After cover is tensioned end to end, secure sides and tension with pipe and ratchet.



PEMBINA VALLEY CANVAS		WINKLER, MANITOBA	
DESIGNED BY:	MANUFACTURED BY:		
B.H.	TITLE:		
DATE:	Pipe Details		
12/14/05	DESCRIPTION:	DRAWING NO.	
	30' Barn		



Pull cover onto frames. Insert pipe sections into pipe pockets and join sections to each other. Glue joints. Use belts and ratchets to stretch cover.

PEMBINA VALLEY CANVAS		WINKLER, MANITOBA
DESIGNED BY:	MANUFACTURED BY:	
B.H.	TITLE:	
DATE:	DESCRIPTION:	
12/15/05	30' Barn	PIPE POCKET SECTION
		DRAWING NO.